

Facts & Figures

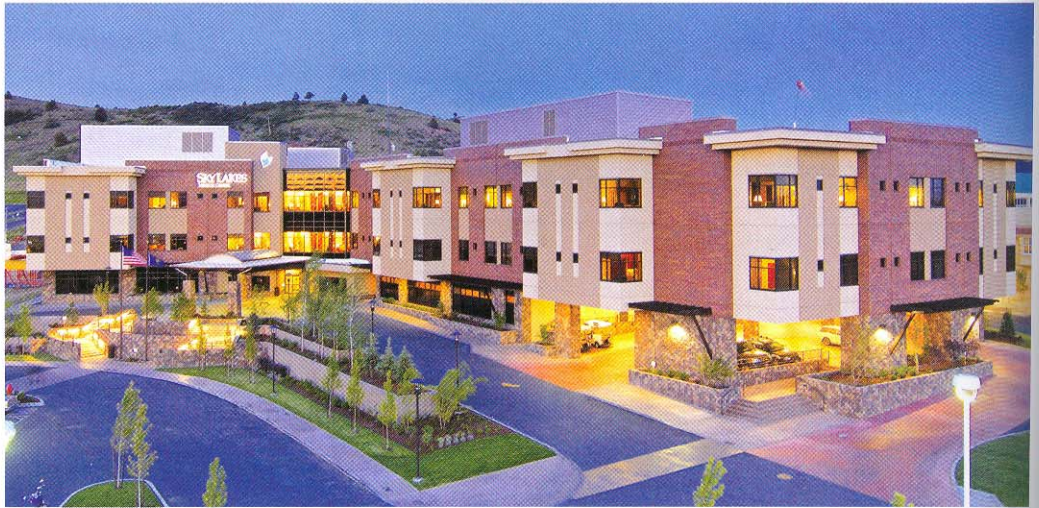
Owner/Operator: Sky Lakes Medical Center, Inc.
Type of Project: An inpatient addition to a hospital
Architects: Ankrom Moisan Associated Architects, Portland, OR; Pedersen & Pedersen Architects Inc., Klamath Falls, OR
General Contractor: Skanska USA Building Inc., Beaverton, OR
Size: 113,725 square feet
Cost: \$39.2 million
Construction Time: February 2005 - June 2007
The Need: Additional space for inpatient care and a short-stay/observation unit
The Challenge: Dealing with rising costs during construction, and minimizing disruption to the existing facility

Supportive Team Members

Johnson Controls, Inc.
Building Automation Systems

KPFF Consulting Engineers
Consulting Engineers

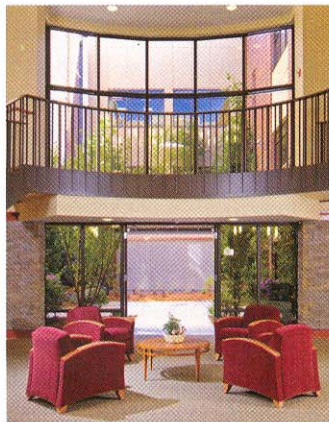
Macdonald Environmental Planning, PC
Landscape Architecture



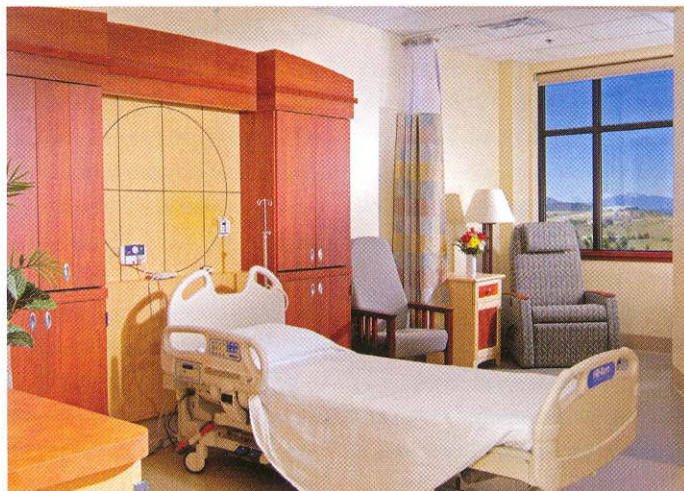
Klamath Falls, Oregon

Sky Lakes Medical Center Addition

A new addition to the existing Sky Lakes Medical Center, formerly known as Merle West Medical Center, was built to replace inpatient care space and to develop a short stay/observation unit. The



existing facility, built in two separate phases in 1965 and 1976, had patient care locations on separate floors on different ends of the building, making patient care delivery complex and inefficient. In addition, the existing facility was running out of space to provide for a growing patient base. According to Thomas J. Hottman, public affairs officer for Sky Lakes Medical Center, and Leslie A. Flick, vice president of support services for Sky Lakes Medical Center, the project's owner wanted to create a healing environment to deliver health care in a holistic way that tends to the needs of the whole patient — body, mind and spirit.



Photos courtesy of Mike Houska

The 113,725-square-foot, three-story addition includes 67 medical/surgical patient rooms with 84 beds and a separate short-stay/observation unit. Additionally, its design incorporates the ability to expand north, and the rooms and infrastructure are sized to accommodate future technologies and the development of treatment options. These elements allow Sky Lakes Medical Center to provide quality healthcare services to the surrounding community for the next 30 to 40 years.

The new addition is also built to be sustainable and includes features such as improved indoor air quality with 100 percent fresh air intake and exhaust, and mechanical and electrical systems that create a healthy environment within and outside the building. The addition is also energy efficient, with a projected \$217,400 annual energy-cost savings.

Building the addition came as no easy task, however. Construction costs were high, and raw materials and utility costs rose as much as 300 percent due to the effects of natural disaster and global construction demands in China and India, according to Hottman and Flick. Minimizing disruption to the



existing building during the construction of the addition was also a challenge. However, the team members worked together to address issues as they arose and keep operations running smoothly.

According to Hottman and Flick, the most unique feature of the new addition is that it was constructed under a general manager/general contractor (GM/GC) arrangement with the project's general contractor, which allowed the team to discuss constructability issues during planning and design, making it possible to build more efficiently. Eighteen months of research were conducted by the team prior to beginning programming. Criteria were established during programming that became the yardstick by which every project decision was weighed and included objectives

and goals delivered on behalf of the patients, staff, community and physicians. In addition, measurements of success were established to determine whether efficiencies were realized. Said Hottman and Flick, "The diversity of the team and the inclusion of staff in the design of the project all greatly contributed to its success."

Completed in June 2007, the new addition to the Sky Lakes Medical Center provides the existing hospital with the ability to offer its community a long-term commitment to healthcare services in the area. Hottman and Flick said, "We believe we have provided a quality space...for our community and have a special place in which to deliver health care to our friends, neighbors and families." ■

— Stacey Nathanson



Photos courtesy of Mike Houska

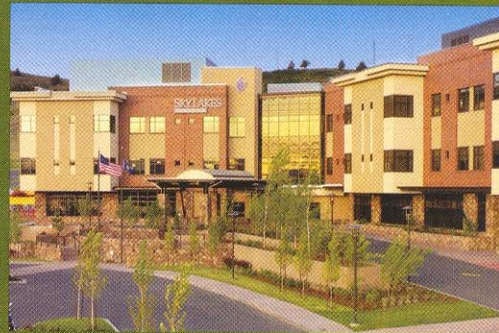


MACDONALD

ENVIRONMENTAL PLANNING, PC

- Healthcare
- Housing
- Community Spaces
- Greening Architecture

Sky Lakes Medical Center - Thank you for your commitment to healing environments



www.mep-pc.com

1022 SW Salmon Street • Suite 222 • Portland, OR 97205

Ph: 503.224.1225 • Fax: 503.295.6906